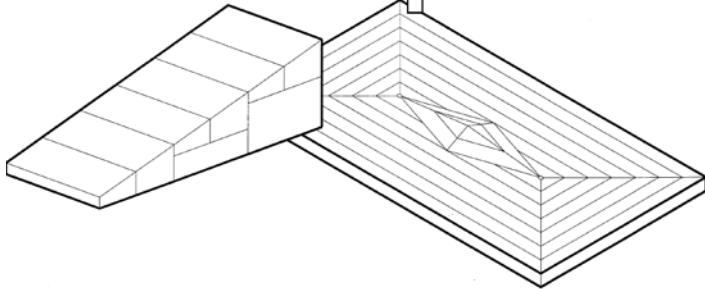


Tapered Roofing

bradco tapered



As Bradco Supply has grown, Bradco's Tapered Department has expanded to fit the tapered needs of today's contractor. Combined, we are one of the largest tapered groups in the country. We offer the very best service in the industry with:

Service — Upon receipt of your fax or plans and specs, we will provide you with the most complete tapered quote in the industry. Our quote forms provide the contractor with all information necessary to complete their bid, including a conceptual layout of the tapered design to eliminate any confusion in the scope of work.

Speed — Most projects are completed within 24 to 48 hours of receiving fax or roof plans and specs. Many are done the same day.

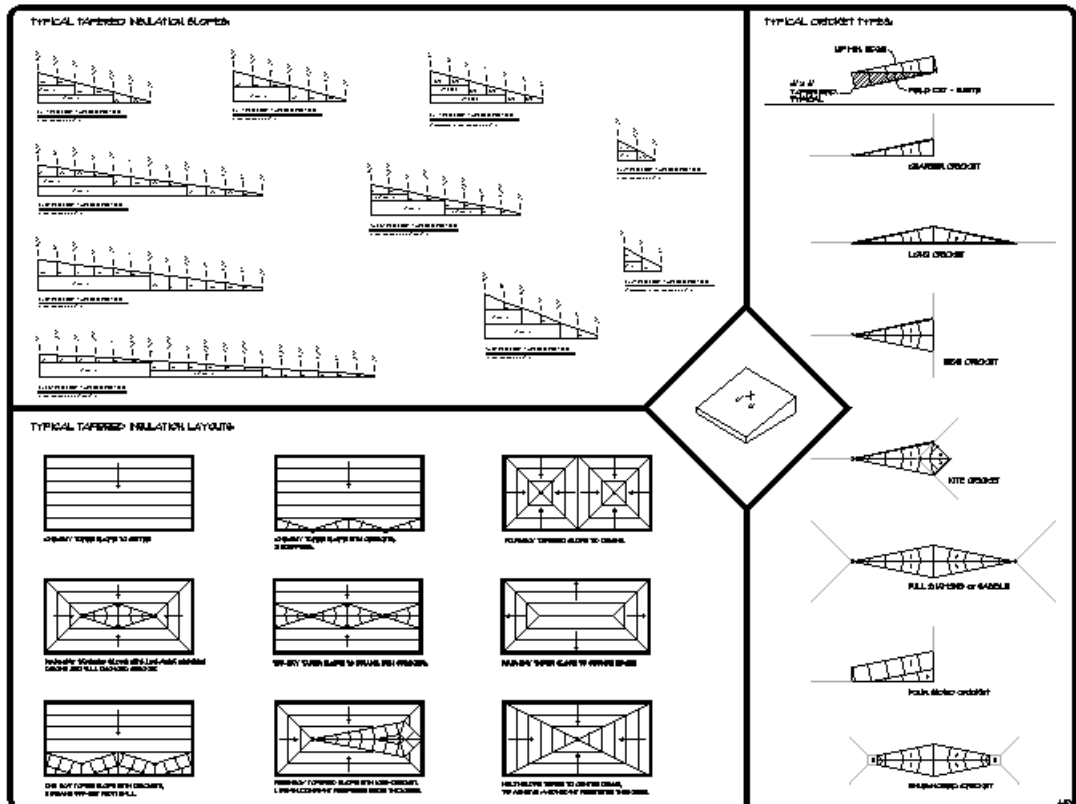
Flexibility — We can combine various types of tapered insulation to create the right total system for your tapered project, all from one source!

Experience — Our project managers have extensive tapered experiences; we know your market and job conditions, and are familiar with all types of systems.

Convenience — We have over 80 branches currently stocking tapered insulation systems at all times, plus the service to handle any size project! We have ten tapered design specialists in seven locations ready to service your tapered insulation needs. Discover the very best in competitive quotes, job turnaround time, technical expertise, service and professionalism with Bradco Tapered!

COMMERCIAL ROOFING

- Portland, ME
- Syracuse, NY
- Lakewood, NJ
- Aurora, IL
- N. Little Rock, AR
- Apollo Beach, FL
- Woburn, MA



Be sure to visit the Tapered Department on-line at www.bradcotapered.com to locate the project manager nearest you. We can also send tapered quotes and shop drawings for bids and submittals on the internet. All of the tapered offices are linked on a network to insure our level of service. We provide complete quotes for the entire tapered system - no middlemen needed to piece together your quote. We provide full size color-laminated shop drawings with all orders, complete with matching isometric details. We quote virtually all types of tapered systems, specializing in:

Perlite, Polyisocyanurate, Composite, Extruded Polystyrene, Expanded Polystyrene, Foamglass

DID YOU KNOW?

Ponding water remains the major cause of roof failure. A square foot of 1" deep water weighs 5.2 lbs. Therefore, a 150 square roof with 1" of ponding water weighs 26,000 lbs.

Fax To: MIKE @ Copy to: DICK IANNUZZO Company: BRADCO SUPPLY 357 Spencer Street Syracuse, NY 13204 Phone #: 315-479-7725 Fax #: 315-479-0551	<p>357 SPENCER STREET SYRACUSE, NY 13204 315-472-9522 / 888-964-9827 FAX: 472-9563</p> <p>website: www.bradcotapered.com</p>
General Project Information: Job Name: GORDEN STUDENT CENTER / OCC Location: SYRACUSE, NY Job #: ON-602001-X	
Date Quoted: 12/20/2006	
Tapered System Description:	
Material: POLYISO Tapered Area (sq): 177 Slope: 1/4" PER FOOT Minimum Start: .5" Maximum Thick: 6.5" Fill Insulation: 2" ISO Base Layer: 1.5" POLYISO Overlay: N/A	Cricket Material: POLYISO Cricket Area (sq): 40 Cricket Slope: 1/2" PER FOOT Cricket Fill: 2" ISO Total Sq. Applied: 563.72 Total Sq. Material: 632.00 Avg. R-Value: 29.0
Project Manager: Larry O'Neill E-Mail: Loneill@bradcosupply.com	Price: 44,366.00 Valid if shipped by: 1ST QTR '07
Notes:	
<small>IMAGE SHOWN ABOVE REFLECTS BRADCO'S DESIGN INTENT. ALL SUBMITTALS ARE SUBJECT TO ARCHITECT / CONTRACTOR APPROVALS. *Taxes not included. IMPORTANT - As a supplier of materials only, Bradco Supply Corp. does not assume responsibility for errors in design, engineering, quantities or dimensions. Architect and/or contractor shall verify all drain locations, perimeter dimensions, sizes, materials and R-values. Contractor is responsible for verifying this quote to insure that it meets job specifications. All shop drawings must be approved prior to material shipment.</small>	

1/2" PER FOOT POLYISO CRICKETS

TYPICAL SECTION

- 1/2" METROFIB BRG.
- TAPERED POLYISO SYSTEM
- 1 1/2" POLYISO BASE LAYER
- 8"x8" DENDROCK
- METAL DECK

TRANSITION DETAIL

USE A COMPACT INSULATION THICKNESS AT BUILDING PERIMETER IS REQUIRED AND THE TAPERED INSULATOR DOES NOT ADHERE THE TAPERED EDGE BRG CAN BE 1/2" IN TO PROVIDE A SMOOTH TRANSITION TO TOP OF BOND BLOCKING.

EXPLODED ROOF PLAN

TAPERED INSULATION LAYOUT

APPROVALS:

DATE: _____

DATE: _____

bradco tapered

357 SPENCER STREET SYRACUSE, NY 13204
 TEL: (315) 472-9522 FAX: (315) 472-9563

GORDEN STUDENT CENTER

LOCATION: GORDEN STUDENT CENTER
 CONTRACTOR: COFFINCO COLLAGE
 GENERAL CONTRACTOR: COFFINCO COLLAGE
 ARCHITECT: COFFINCO COLLAGE
 PROJECT NO.: 06-001
 DRAWING NO.: 06-001-001
 DATE: 12/20/06
 SCALE: 1/8" = 1'-0"

JOB NO. ON-SITE: _____
 SCALE: 1/8" = 1'-0"
 DATE: 12-20-06
 DRAWN BY: L. O'NEILL
 PAGE 1 OF 1

HOP ABOARD THE BRADCO TAPERED EXPRESS!

Ask your local Bradco for the tapered project manager nearest you!

Visit us at www.bradcotapered.com